

FL958K

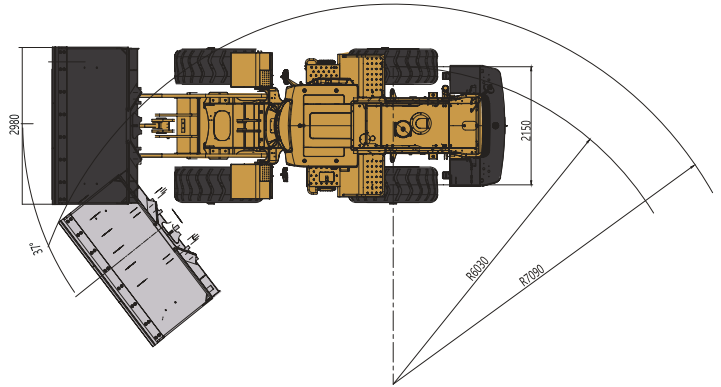
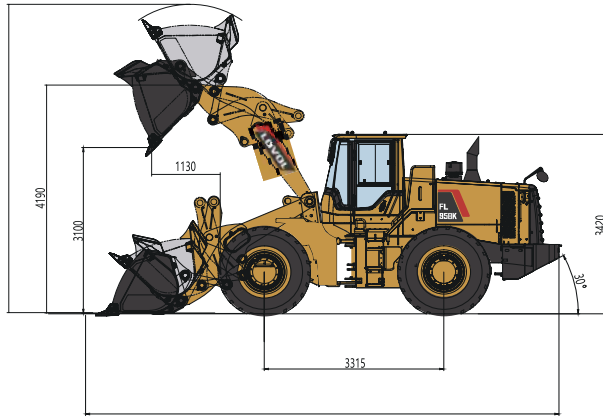
WHEEL LOADER

Engine Model	WEICHAI WD10G220E21
Rated Power	162KW
Operating Weight	17440KG
Bucket Capacity	3.3M³
Max. Breakout Force	165KN



FL958K Wheel Loader Specifications

FL958K Dimensions



Item	Specifications
Rated Load	5500kg
Max. Traction Force	170kN
Max. Gradeability	30°
Max. Dump Clearance	3100mm
Dump Reach	1130mm
Wheel Tread	2150mm
Wheelbase	3315mm
Overall Dimension (L×W×H)	8590mm×2980mm×3420mm

Engine

Emission Standard	Stage II
Number of Cylinder	6-126x130
Max. Torque	860N·m
Rated Speed	2200rpm
Displacement	9.726L

Transmission System

Torque Converter	Single stage single phase three element
Modulus of Converter	2.8
Transmission	Electronical control countershaft
Gear Shift	4 forward, 3 reverse
Max. Speed	38km/h

Front and Rear Axles

Axles Type	Dry
------------	-----

Tyre

Tyre Size	23.5-25
Ply	Front 18, rear 16
Front Tyre Pressure	0.38-0.4Mpa
Rear Tyre Pressure	0.33-0.35Mpa

Steering System

Type	Fix&Variable hydraulic system
Steering Angle Each Direction	37°
Min. Turning Radius	7090mm

Hydraulic System

Working Pressure	18Mpa
Boom Lifting Time	6.2s
Total Cycle Time	10s

Brake System

Service Brake	Air over hydraulic caliper disc brake
Park Brake	Air-cut brake

Service Refill Capacity

Fuel Tank	350L
Hydraulic Tank	210L
Engine Oil	20L

Key Features



PRODUCTIVITY

- 5.5T wheel loader equipped with 3.3m³ standard bucket, high-efficiency power train system is perfectly matched with hydraulic multi-stage power system that makes machine work fast and efficient.
- The proven linkage structure is very efficient which has big breakout force, quick movement and high lifting capacity features.
- Low-effort joystick control system delivers high-efficiency operation with ease and fast.

RELIABILITY

- The H series features many components which leverage product designs that have delivered reliable and durable machines.
- Adopt world class engine which provides excellent service and part availability in market.
- Optimized layout of pipelines and dual-seal technology can avoid oil leakage and make hydraulic system more reliable.

ROBUSTNESS

- Reinforced center-articulated frame which has passed million times fatigue experimental test, 1,000 hours intensive experimental test and 5,000 hours jobsite test, it has been proved to be robust and durable.
- Bucket use JF440 steel which are joint-invented with renowned steel factory, it is more robust and wearable.
- The key components of axles are reinforced which could extend service time of whole axles and makes it more suitable for heavy-duty applications.

COMFORT

- LOVOL ETX (European Technology Excellent) cab adopts skeleton structure which has great vision, solid frame and lower noise features, these could provide a comfortable working environment for operator.
- High-back mechanical suspension seat with headrest could make operator feel more comfortable.

Core Components

01 Engine



- Standard equipped with WEICHAH WD10G220E21 engine which is specialize for the heavy-dust working environment, it adopts three-stage air filter which can avoid early wear out of engine to extend service life. It also adopts multi-stage fuel filter which is suitable for various fuel to ensure the cleanliness of engine system.

02 Transmission



- The transmission adopts Germany ZF 4BP210 gearbox, it is durable and reliable that can provide long service time.
- Using electronic control shift technology, the operating lever has KD function to realize efficient switching between the second gear and first gear.

03 Axles



- Axle housing is optimized design through increasing the cross-section, the brace bearing of wheel hub is also reinforced, that make front axles capacity reaches 40T.
- Main reducer and wheel hub are reinforced, the service lives rise 30%.

04 Cab



- Integrated closed skeleton structure cab which has great vision, equipped with air conditioning and high-back mechanical suspension seat, that make operator more comfortable
- The cab has micro pressurizing air system that makes the environment cleaner and comfortable.

05 Frame and Articulation



- New reinforced front and rear frames with patented composite articulated structure went through million times fatigue experimental test, 1,000 hours intensive experimental test and 5,000 hours jobsite test, reach super strong payload capacity.

06 Hydraulic System



- The hydraulic system is fix & variable system and the steering pump is piston pump with high bearing pressure and high reliability features.
- Hydraulic oil filter's filtration ratio is 200 (means 99.5% impurities could be filtered out), that makes hydraulic system cleaner and more reliable.

Attachments



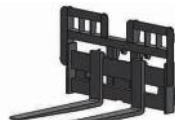
Larger Bucket



Log Grapple



Rock Bucket



Pallet Fork



Coal Bucket



Side-dump Bucket



Powered by **Innovation**

NASR | MACHINE
INTERNATIONAL

www.nasrmachine.com

sales@nasrmachine.com

+98 21 61 777