

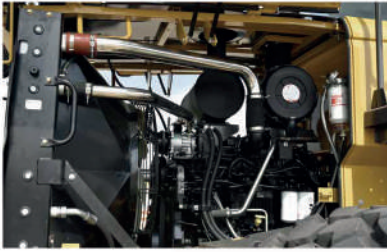
Construction Equipment

FL976H



RELIABILITY

Strict testing and verification, durable parts, worthy of your trust.



Engine

- Cummins QSL9.3 engine specially customized for wheel loaders, superior performance, high reliability.



ZF automatic shift gearbox

- World-famous German ZF4BP230 original heavy-duty automatic shifting gearbox, reliable and comfortable, low maintenance costs.



Enhanced drive axle

- 7T dedicated enhanced drive axle, high carrying capacity;
- Rear oscillation axle, high reliability;
- The drive shaft connection adopts a face tooth structure for high transmission torque and high reliability.





Structural parts and articulation

- New reinforced frame and patented composite hinge structure, millio bench impact fatigue test, 1000 hours enhancement test, 5000 hours industrial test to achieve super load carrying capacity;
- The bucket is made of HM360 jointly developed by well-known domestic steel mills, high strength, wear resistance;
- 20CrMnTi honeycomb bushing, and the inner surface is sprayed with patented technology, self-lubricating, long service life.



Brake system

- The brake system has a dry, back-blowing water removal device to prevent corrosion of the pipeline and freezing in winter, reliable and safe;
- 6 brake calipers on the front axle for safe and reliable braking.



EFFICIENCY

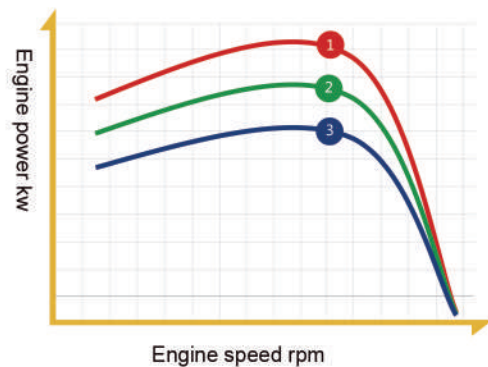
High productivity, low operation costs.

Compound working conditions, powerful, efficient

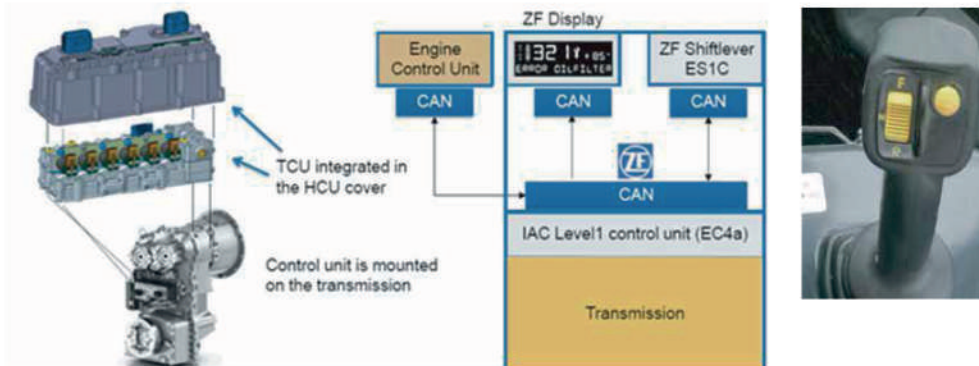
· Cummins LOVOL , exclusive power curve, excellent acceleration performance and fast response.

High-torque engine, high-efficiency drive system, hydraulic multi-stage power system, perfect matching, energy savings

Optimize the three power modes to improve production efficiency according to working conditions



Pilot joystick is integrated with FNR automatic gearshift, gear 1~4 can shift automatically, and machine start at gear-2. It can automatically shift to gear-1 when inserting into material with resistance, set free your right hand.

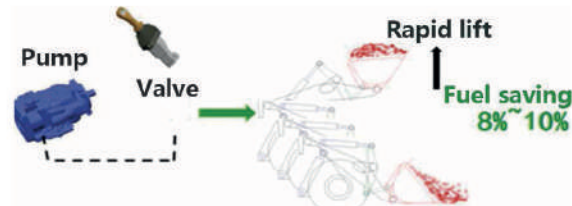


Efficient constant variable hydraulic system

- The steering pump is a variable displacement piston pump with high load bearing pressure and high reliability.
- The filter of hydraulic system has a filter ratio of 200 (99.5% impurities can be filtered out), clear system, reliable.



Steering and transport conditions: Provide flow based on steering needs, efficient, energy saving.



Under operating conditions, when the load is higher than the system pressure, The working pump is unloaded at high pressure and does not perform confluence; the steering pump maintains constant pressure and supplies oil with small displacement.

Efficient work device

- High-efficiency linkage mechanism, strong digging power, fast movement, strong lifting ability.
- Optimized bucket, low insertion resistance, high full bucket rate.
- The bucket has a baffle to prevent material from spilling.
- Standard super-wide 750/60-25 radial tires for greater load carrying capacity, high speed, efficient.

COMFORT

Comfortable, spacious, ergonomic design, excellent visibility, comfortable drive.

Comfortable operation

- Full hydraulic pilot control work unit and steering system, convenient operation, low driver's working intensity;
- Hydraulic flexible and mechanical rigid steering limit. Flexible limit first, and then rigid limit, low impact, comfortable drive;
- The pedals and various controls meet the best ergonomic design, no fatigue after long time operation;
- High backrest, high performance mechanical suspension seat to reduce the fatigue of drivers and passengers;
- Hydraulic pilot operation, the pilot operating box can be adjusted according to the operator's comfort, light manipulation, good coordination.

Comfortable driving environment

- Integral fully enclosed gantry cab, anti-rolling, falling objects, low noise, safe and healthy driving environment;
- Panoramic cab with greater visibility. The driver can always be aware of any environmental risks at the ground;
- Standard rear view camera to eliminate blind spots, safe for reversing driving;
- With a slightly pressurized air conditioning system, clean and comfortable environment is always with operators;
- The instrument panel has a fault information display function to improve human-computer interaction.



MAINTENANCE

Simple routine inspection, long maintenance intervals.

Easy routine maintenance

- Hood with large side door, upturned design, large opening angle, "one-stop" maintenance of engine air filter, machine oil filter, diesel filter and double filter;
- The pin lubrication point is taken out for easy routine maintenance;
- The brake system has a dry backflushing device to reduce the number of times the air reservoir is drained;
- Single-layer parallel radiator, no clogging, easy cleaning.

Maintenance

- Open split brake caliper, easy replacement of brake pads without disassembling the tires;
- The hydraulic system is equipped with quick-change couplings for easy testing and inspection;
- CAN diagnostics, quickly resolving gearbox problems based on fault codes.

Extended maintenance cycle

- Long maintenance and care intervals, high machine utilization while significantly reducing operating costs.

Engine oil 500h

Engine oil filter 500h

Hydraulic oil 1800h

Hydraulic oil filter 1200h

Transmission oil 1000h

Transmission oil filter 1000h



WIDE APPLICABILITY

Environmental adaptability

- Normal operation at ambient temperature -35 to +45°C (optional cold start device);
- Normal operation at an altitude of 3000m;
- High-flow, high-precision filters for various systems for operation in high-dust environment;
- Optional oil bath filter for engine air filters.

Operating conditions

- Different buckets and attachments depending on the material.

STANDARD CONFIGURATION



Power transfer system

Cummins QSL9.3
Water separator
Fuel prefilter + secondary filter
Engine intake cyclone prefilter
Three-stage dust air filter
Three output powers (fuel-saving switch)
Hydraulic single stage, three-elements torque converter
Electronically controlled shifting counter shaft gearbox
Air chamber booster brake
Reinforced drive axle
Wide base bias tire



Digital monitoring system

Including the following meters:
- Engine tachometer
- Brake barometer
- Fuel level gauge
Thermometer: Engine coolant thermometer, transmission oil thermometer
Working hour meter/fault display
Includes the following indicators/alarm lights:
- Temperature indicator (high engine coolant temperature, high transmission oil temperature)
- Pressure indicator (low transmission oil pressure, low brake pressure)
Engine air filter blockage
Battery (charged/uncharged) warning light
Engine failure
Parking brake warning light



Cab

ETX cab
Air suspension seat
Steering wheel
Rear view mirror, exterior rear view mirror
Hat-and-coat hook
Cup holder
Sun visor
Rotary window
Air conditioning
Fan
Cab ceiling light
24V power outlet
Front wiper/washer, spray bottle



Hydraulic system

Load-sensing flow amplification steering system
Fixed/variable displacement hydraulic system
Pilot joystick integrated with FNR switch



Electrical system

24V electrical system
2 maintenance-free 850CCA batteries
Ignition key: Start/stop switch
Main power switch
Two rear combination lights (parking lights, turn signals, reversing lights, position lights)
Two front combination lights (high/low beam light, turn signal)
Two front work lights
Two rear work lights
Back-up alarm
70A alternator
Electric horn
Rear view camera



Working device

Z-bar linkage

Honeycomb bushing



Other

Grease filling nozzle

Pinned articulated towbar

Visual check: Engine coolant, hydraulic oil and transmission oil level

Toolbox

Repair kits

Locking lever

OPTIONAL CONFIGURATION

Some optional devices may be standard in some markets, but some optional configurations may not be available in certain markets.

You must contact your local dealer to know the availability of equipment or adjust according to the corresponding requirements.

The specific configuration is subject to the concrete one.



Cab

FOPS/ROPS cab

Radio and video player , including antenna and loudspeaker

Warning Light

Seat belt

Oil bath air filter



Working device

Extended boom/super long arm

Super-large bucket/grain bucket/side dumper/coal bucket/rock bucket

Wood grapple

Marble fork



Lighting equipment

Two front LED work lights

Two rear LED work lights



Other

Automatic centralized lubrication

Intake preheating

Electronic scale



Digital monitoring system

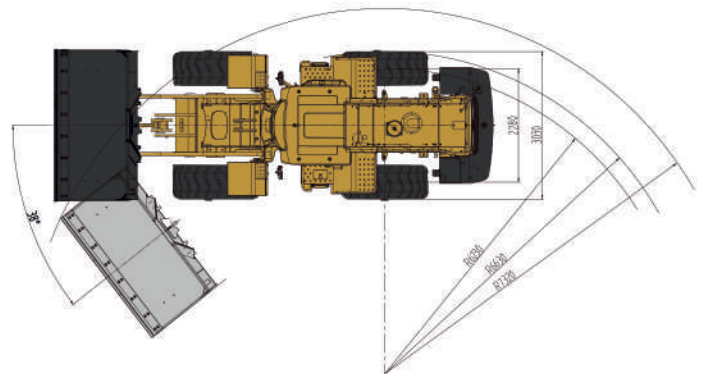
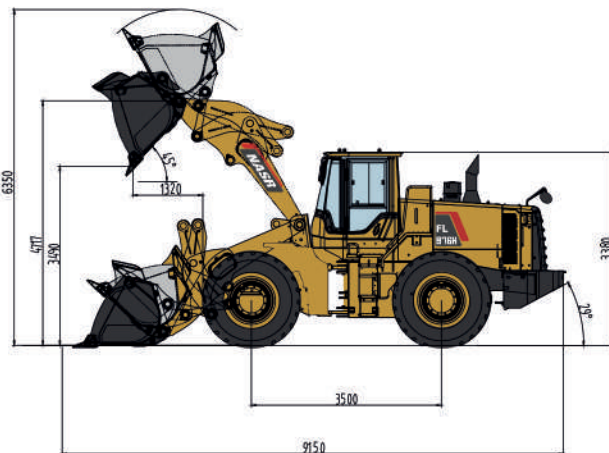
HMI 4.3" color LCD instrument

SPECIFICATION

Accessory can be equipped with standard arm/long arm, which can be equipped with standard bucket, rock bucket, coal bucket, wood grapple and flat fork according to different working conditions.

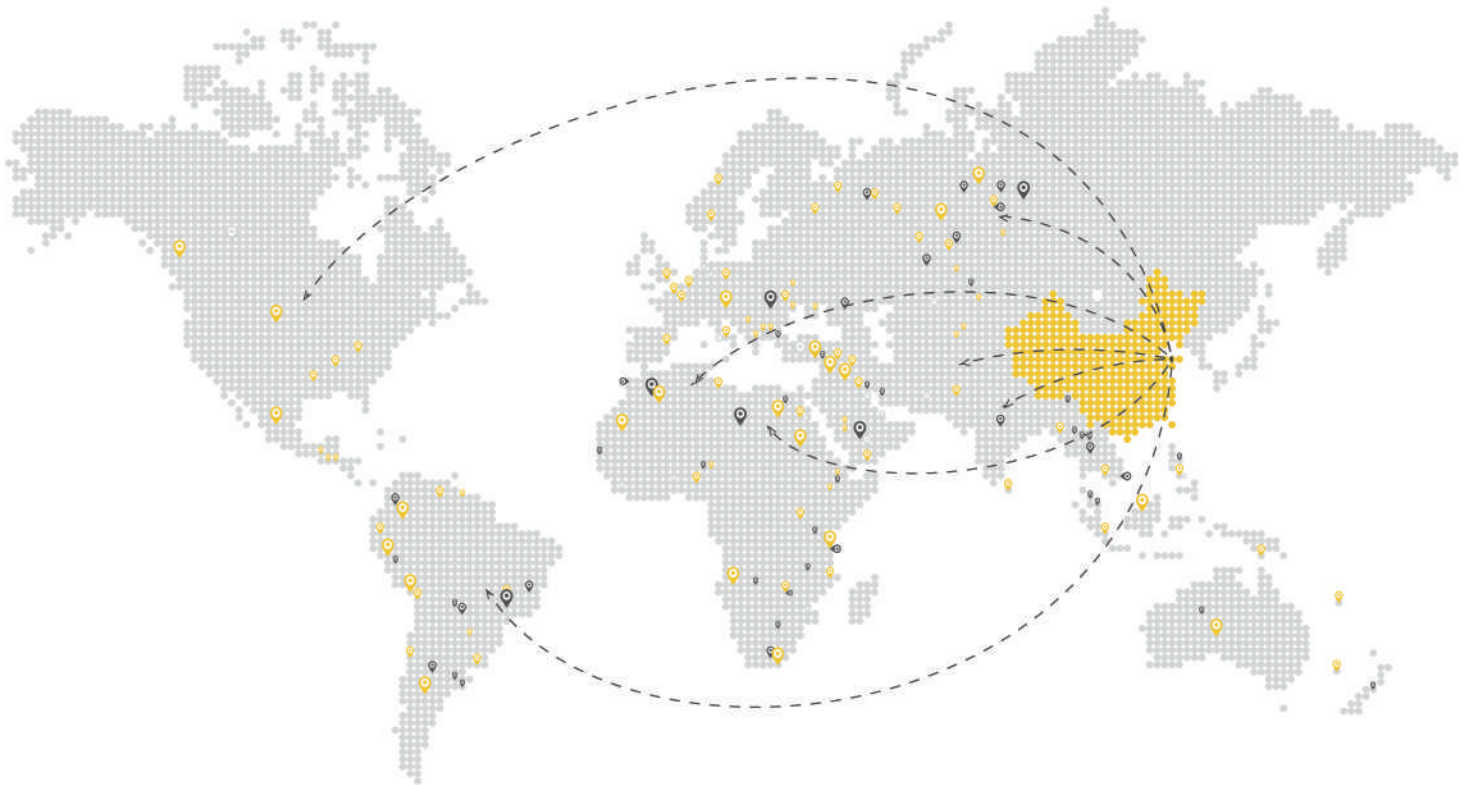
Name	Unit(m³)	Standard arm	Dumping clearance(mm)	Long arm	Dumping clearance (mm)	Extra long arm	Dumping clearance (mm)	Coal-specific U-arm	Dumping clearance (mm)
Standard bucket	3.5	●	3210	○	3601	○	3842	/	/
Super-large bucket	4.0	○	3154	○	3544	○	3785	/	/
bucket	4.2	○	3091	○	3480	○	3721	/	/
U-shaped coal bucket	5.0	/	/	○	3424	○	3665	/	/
bucket	6.0	/	/	/	/	/	/	○	3345
U-shaped bucket	4.5	/	/	/	/	/	/	○	3473
Rock bucket	3.0	○	3236	/	/	/	/	/	/
Side dumper	2.8	○	3029	/	/	/	/	/	/
Iron sand bucket	2.8	○	3342	○	3732	/	/	/	/
Marble fork		○	---	/	/	/	/	/	/
Wood grapple			3392	/	/	/	/	/	/

● Standard ○ Optional / Special needs



PRODUCT SUPPORT NETWORK

Nasr Construction Machinery has established a complete service network covering more than 50 countries in Asia-Pacific- Africa. South America and Russia etc., so as to provide better services for global customers.



Technical Parameters

Overall dimensions (mm) (length × width × height)	9150X3200X3380	Turning radius, outside of bucket (mm)	7320
Rated load (kg)	7000	Steering angle (°)	38
Operating weight (kg)	23600	Dumping clearance (mm)	3490
Max. speed (km/h)	37	Wheel tread (mm)	2280
Wheelbase (mm)	3500	Traction (kN)	189
Digging force (kN)	190	Total cycle time (s)	10
		Gradeability(°)	29
		Dumping reach (mm)	1320

Certain specification(s) are based on engineering calculations and are not actual measurements. Specification(s) are provided for comparison purposes only and are subject to change without notice. Specification(s) for your individual Doosan equipment will vary based on normal variations in design, manufacturing, operating conditions, and other factors. Pictures of Doosan units may show other than standard equipment.

Powered by Innovation

نصرماتين

شركة نصرماتين (سهمانية) ك.م.س.



www.nasrmachine.com

sales@nasrmachine.com

+98 (21) 61777

Whatsapp : +98 (912) 30 430 86