

Construction Equipment

# FL958H



## 👍 RELIABILITY

Strict testing and verification, durable spare parts, trust worthy.



reduce the malfunction rate of early wear and tear

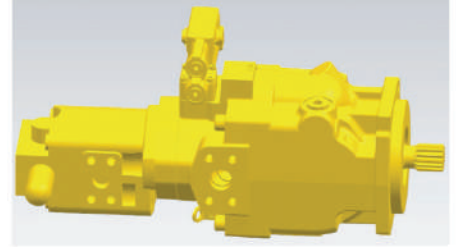
### Engine

- For various high-dust working environments of the loader, the three-stage air filter is adopted to effectively reduce the malfunction rate of early wear and tear of the engine and extend the service life;
- With multi-stage fuel filter, fuel adaptability is good, ensuring the cleanliness of the engine system.



### ZF gearbox

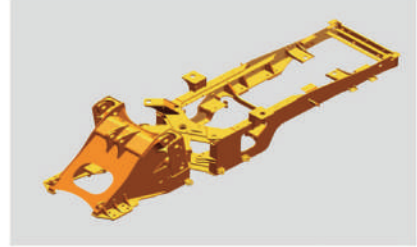
- The world-renowned German ZF gearbox is highly reliable, can operate comfortably and significantly reduce the maintenance costs.



### Hydraulic system

- The flow of the hydraulic system is constant, the steering pump is a variable displacement piston pump with high load bearing pressure and high reliability.
- The hydraulic system filter element has a filtration ratio of 200 (99.5% of impurities can be filtered out), thus the system is cleaner and more reliable.





## Braking system

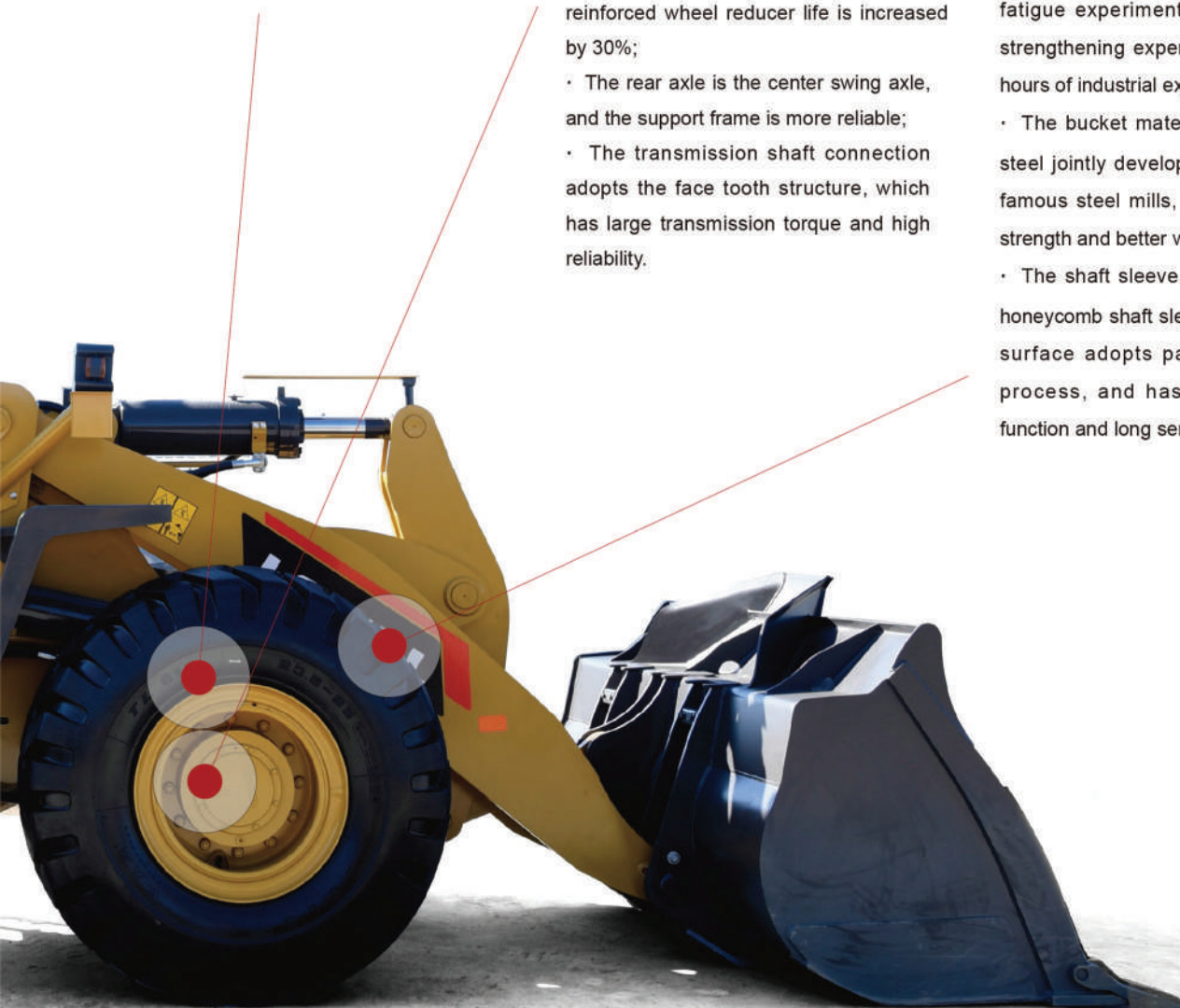
- The braking system is equipped with a drying and back-blowing water removal device to prevent pipeline corrosion and freezing in winter, and the brake is more reliable and safer.

## Reinforced drive axle

- With optimized design of axle housing, the cross section is enlarged, the bearing of the wheel reducer is enlarged, and the carrying capacity of the front axle can reach 40t;
- With reinforced main reducing gear and reinforced wheel reducer life is increased by 30%;
- The rear axle is the center swing axle, and the support frame is more reliable;
- The transmission shaft connection adopts the face tooth structure, which has large transmission torque and high reliability.

## Structural parts and articulation

- With new reinforced frame and patented composite hinge structure, the super-bearing capacity has been fully verified by millions of impact fatigue experiments, 1000 hours of strengthening experiments, and 5000 hours of industrial experiment;
- The bucket material adopts JF440 steel jointly developed with domestic famous steel mills, which has higher strength and better wear resistance;
- The shaft sleeve adopts 20CrMnTi honeycomb shaft sleeve, and the inner surface adopts patented spraying process, and has self-lubrication function and long service life.



## EFFICIENCY

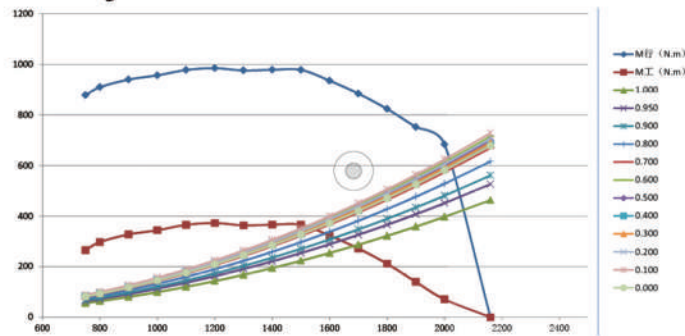
Higher productivity and lower overall operating costs.

Operation under composite operating condition is stronger and more efficient.

; NASR customized power and exclusive power curve, excellent acceleration performance and quick response

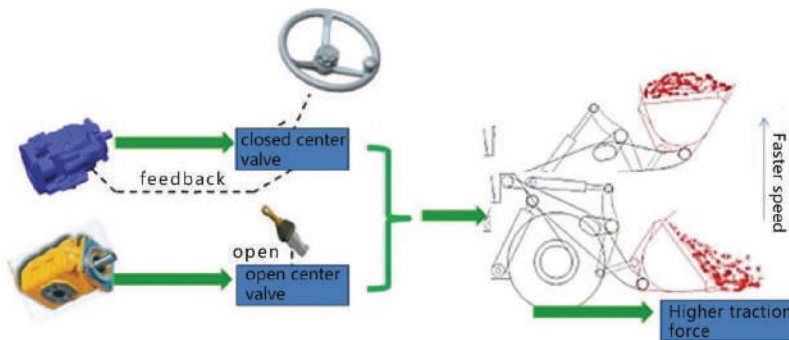


The high-torque engine is perfectly matched with the high-efficiency drive system and the constant variable hydraulic system optimal power modes are apted in light of needs of working conditions, improving the production efficiency.



## NASR constant variable hydraulic system with independent intellectual property rights

- The flow rate of the steering pump is always consistent with the flow rate of the steering gear, which can greatly reduce the system overflow loss and save 10% of the energy ;
- The power saved in the steering under the composite operating condition is distributed to the drive system and the working hydraulic system, and the operating efficiency of the whole machine is higher.



## Efficient working device

- With high-efficiency linkage mechanism, it provides large digging force, quick action and strong lifting ability;
- With optimal design of the bucket type, the insertion resistance is small, and the full-bucket rate is high;
- The bucket has a baffle plate to prevent material from spilling.

## Electronic silicone oil fan (optional)

- More power and torque of the engine is distributed to the drive system and hydraulic system, providing good power performance and high operating efficiency;
- The system can automatically adjust the fan speed by detecting the water temperature and transmission oil temperature through the engine ECU to ensure the best operating environment temperature, and the energy saving effect is more than 10%;
- When the temperature is low in winter, the fan consumes low power, the engine temperature rises quickly, the efficiency is high, and the warm air effect is good.

## COMFORT

**With comfortable operation, spacious and ergonomic design, and excellent vision, driving and riding are more comfortable.**

### Comfortable operation

- Using German ZF technology to realize electronically controlled shifting, the joystick has KD forced shifting function, which realizes efficient switching between the second gear and the first gear;
- The pilot joystick integrates FNR and KD shifting functions to free the left hand, and provides comfortable operation and high work efficiency (optional);
- The variable load sensing hydraulic system supplies as required, thus the steering is more stable, lightweight and accurate, which can reduce the labor intensity of the driver and improve operation efficiency and safety;
- The pedals and various control components conform to the optimal design of man-machine engineering, and drivers can work for a long time without fatigue;
- High backrest and high performance mechanical suspension seat alleviate the fatigue of drivers and passengers;
- With pilot operation of working hydraulic pressure, the pilot operation box can be adjusted according to the operator's comfort, providing easy operation and good coordination.

### Comfortable driving environment

- With integrated and fully enclosed frame structure cab, it can prevent rollover and falling objects with low noise, creating a safe and healthy driving environment;
- With panoramic cab, the vision is wide, and the driver can always know the surrounding environment of the equipment during operation;
- The rear part of the machine hood is equipped with a standard rearview mirror or an optional reversing camera to eliminate the blind area of vision and make reversing safer;
- With a micro pressurizing air conditioning system, the environment is cleaner and more comfortable.



## MAINTENANCE

Simple routine inspection, long maintenance intervals.

### Easy routine maintenance

- Hood with large side-open door, upturned design, large opening angle, "one-stop" maintenance of engine air filter, machine oil filter, diesel filter and double filter;
- The pin lubrication point is taken out for easy routine maintenance;
- The brake system has a dry backflushing device to reduce the number of times the air reservoir is drained;
- Single-layer parallel radiator, no clogging, easy cleaning.
- A transparent kettle mounted on the radiator to display the antifreeze liquid level, easy observation, recovery of the overflow antifreeze and automatic rehydration.

### Maintenance

- GPS remote fault diagnosis, high detection efficiency;
- Open split brake caliper, easy replacement of brake pads without disassembling the tires;
- The hydraulic system is equipped with quick-change couplings for easy testing and inspection;
- ZF transmission filter with easy access for maintenance.

### Extended maintenance cycle

Long maintenance and care intervals, high machine utilization while significantly reducing operating costs.



## WIDE APPLICABILITY

### Environmental adaptability

- Normal operation at ambient temperature -35 to +45°C (optional cold start device);
- Normal operation at an altitude of 3000m;
- High-flow, high-precision filters for various systems for operation in high-dust environment;
- Optional oil bath filter for engine air filters.

### Operating conditions

- Different buckets and attachments depending on the material.

## STANDARD CONFIGURATION



### Power transfer system

Weichai WP10G220E341/Cummins QSL9.3/

Fuel oil water separator

Fuel prefilter + secondary filter

Engine intake cyclone prefilter

Three-stage dust air filter

Hydraulic three-component single-turbine torque converter

Electronically controlled shifting fixed shaft gearbox

Air chamber booster brake

Reinforced drive axle

Wide base bias tire



### Digital monitoring system

Including the following meters:

-Engine tachometer

-Brake barometer

-Fuel level gauge

Thermometer: Engine coolant thermometer, transmission oil thermometer

Working hour meter

Includes the following indicators/alarm lights:

Temperature indicator (high engine coolant temperature, high transmission oil temperature)

Pressure indicator (low transmission oil pressure, low brake pressure)

Battery (charged/uncharged) warning light

Parking brake warning light



### Cab

ETX cab

Mechanical suspension seat

Steering wheel

Rear view mirror, exterior rear view mirror

Hat-and-coat hook

Sun visor

Rotary window

Air conditioning

Fan

Cab ceiling light

24V power socket

Front wiper/washer, spray bottle

Radio and video player (entertainment), including antenna and speaker

Warning Light



### Hydraulic system

Coaxial flow amplification steering system

Constant variable hydraulic system

Pilot manipulation



### Electrical system

24V electrical system

2 maintenance-free 850CCA batteries

Ignition key: Start switch

Main power switch

Two rear combination lights (parking lights, turn signals, reversing lights, position lights)

Two front combination lights (high/low beam light, turn signal)

Two front work lights

Two rear work lights

Reversing alarm

70A alternator

Electric horn





### Working device

- Reverse six-link
- Honeycomb sleeve



### Other

- Grease filling nozzle
- Pinned articulated towbar
- Visual check : Engine coolant, hydraulic oil and transmission oil level
- Toolbox
- Repair kits
- Locking lever

## OPTIONAL CONFIGURATION

Some optional devices may be standard in some markets, but some optional configurations may not be available in certain markets. You must contact your local dealer to know the availability of equipment or adjust according to the corresponding requirements. The specific configuration is subject to the concrete one.



### Cab

- Anti-roll-over cab (FOPS/ROPS)
- Pneumatic suspension seat
- Seat belt
- Oil bath air filter
- Quick-change device control system
- Rear monitor system



### Working device

- Extended movable arm/ super long arm
- Quick-change multi-function accessory
- Enlarged bucket / grain bucket / side dumping bucket / coal bucket / rock bucket
- Wood grabber
- Marble fork
- flat fork



### hydraulic system

- Flow amplification hydraulic system
- Pilot handle integrated with FNR switch



### Other

- Automatic centralized lubrication
- Cold starting system
- Electronic scale



### Lighting equipment

- Two front LED work lights
- Two rear LED work lights



### drive axle

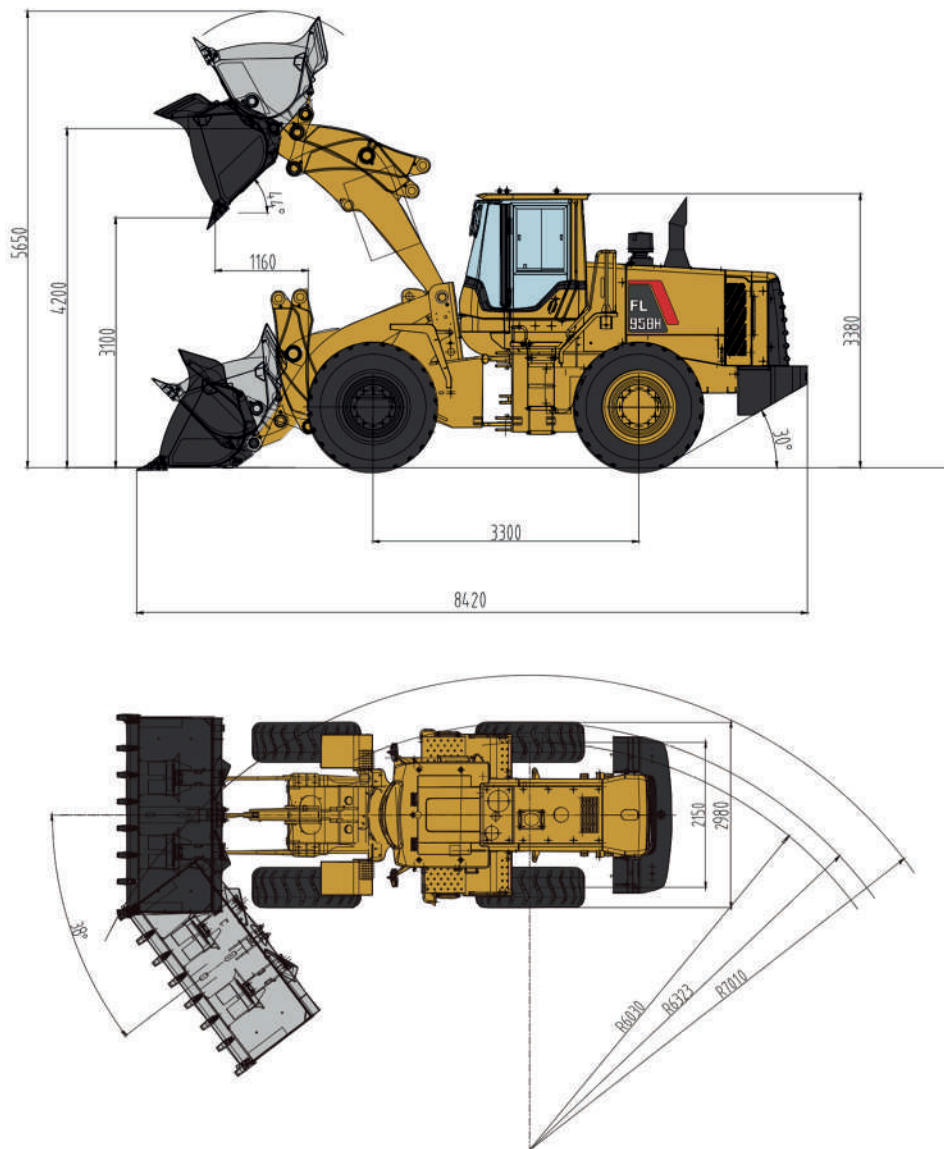
- Wet axle

## TECHNICAL SPECIFICATIONS

The FL958H product's multi-functional accessory can be equipped with standard arm(3.0m<sup>3</sup>)/long arm(3.3m<sup>3</sup>), all other attachments can be developed in light of different working conditions.

Name	Unit m <sup>3</sup>	Standard arm	Unloading height mm	Extended arm	Unloading height mm	Super long arm	Unloading height mm	Coal-specific U-arm	Unloading height
Standard bucket	3.0	○	3131	○	3415	○	3721	/	/
	3.3	●	3100	○	3376	○	3680	/	/
Super-large bucket	3.6	○	3086	○	3372	○	3681	/	/
	3.8	○	3070	○	3368	○	3672	/	/
	4.0	○	3075	○	3359	○	3670	/	/
	4.5	/	/	/	3265	○	3576	/	/
	5.0	/	/	/	/	○	4570	/	/
U-shaped coal bucket	4.5	/	/	/	/	/	/	○	3564
	5.0	/	/	/	/	/	/	○	3500
	5.5	/	/	○	/	/	/	○	3420
Rock bucket	2.5	○	3262	/	3558	/	/	/	/
	2.8	○	3151	/	/	/	/	/	/
Side dumper	2.5	○	3048	○	/	/	/	/	/
Iron sand bucket	2.5	○	3228	/	3524	/	/	/	/
Wood grabber		○	3420	/	/	/	/	/	/
Marble fork		○	2848	/	/	/	/	/	/
quick-change bucket	3.0	○	2966	/	/	/	/	/	/
quick-change bottom fork		○	3353	○	/	/	/	/	/
Bottom fork		○	3491		3787	/	/	/	/

● Standard combination    ○ Optional combination    / Special needs



### Technical Parameters

Overall dimensions (mm) (length × width × height)	8420X2980X3380	Kerb mass (kg)	16830
Rated load mass (kg)	5500	Maximum speed (km/h)	38
Wheelbase(mm)	3300	Wheel tread (mm)	2150
Digging force(kN)	165	Traction(kN)	155
Bucket outer turning radius(mm)	7010	Sum of three items(s)	10.6
Steering angle(°)	38	Gradeability(°)	30
Unloading height (mm)	3100	Unloading distance (mm)	1160

Certain specification(s) are based on engineering calculations and are not actual measurements. Specification(s) are provided for comparison purposes only and are subject to change without notice. Specification(s) for your individual Doosan equipment will vary based on normal variations in design, manufacturing, operating conditions, and other factors. Pictures of Doosan units may show other than standard equipment.

# Powered by Innovation

**نصر ماتي**  
شركة بين العالبي (سهامتي خاص)



[www.nasrmachine.com](http://www.nasrmachine.com)  
[sales@nasrmachine.com](mailto:sales@nasrmachine.com)  
+98 (21) 61777  
Whatsapp : +98 (912) 30 430 86